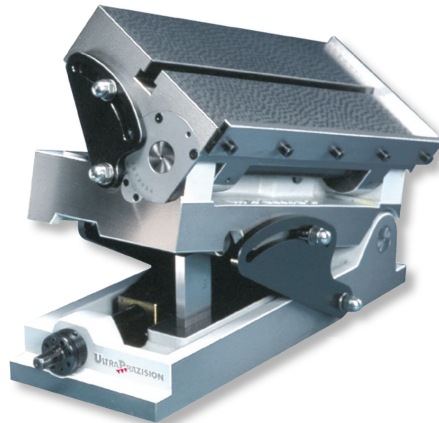


**Angle clamping tables, special cast iron**  
**2 levels adjustable**  
**300x200/170mm GG-0,006mm**

**Product number:** 1593402  
**EAN / GTIN:** 4066918061010  
**Customs code:** 90318080  
**Delivery method:** Truck freight  
**Weight:** 60kg



## Product description

- Works standard
- Adjustment with scale and vernier 3'
- Sine adjustment range 0 – 60°
- Hardened and ground gauge block bases
- Clamping surface with T slots
- Clamping with side clamps
- From size 400x300mm with threaded spindle

**Delivered in individual packages inc. sine table**

**1594 1.. / 1594 2..:** Pivoting range 0-90°

1593 3.. / 1593 4..: **Pivoting range 0-60°**

**! Versions with short side as axis side on request.**

## Technical Data

<b>Size:</b>	300x200/170mm GG-0,006mm
<b>Article number:</b>	1593402
<b>Brand:</b>	ULTRA
<b>Axis side:</b>	2 levels
<b>Flatness:</b>	0,006mm
<b>Grade:</b>	1
<b>Height:</b>	170mm
<b>Measuring surface:</b>	300x200mm
<b>Pivoting range:</b>	0-60°
<b>Roller distance:</b>	200/150mm
<b>T-slots:</b>	2pcs. 12mm
<b>Weight:</b>	60kg