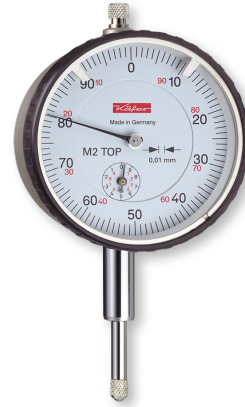


**Dial gauges DIN 878 in box**  
**Metal housing, outer ring polyamide**  
**10/0,01mm Ø58mm**

**Product number:** 1320101  
**EAN / GTIN:** 4066918044921  
**Manufacturer number:** M 2 TOP  
**Customs code:** 90318020  
**Delivery method:** Parcel delivery service  
**Weight:** 0.3kg



### Product description

- DIN 878
- Dimensions acc. DIN EN ISO 463
- Housing Ø 58 mm
- Adjustable tolerance marks
- Clamping shaft Ø 8 mm h6
- Interchangeable measuring insert M2.5

**(Type 1):** Metal housing, outer ring polyamide

**(Type 2):** Metal housing and outer ring

**(Type 3):** Metal housing, outer ring polyamide with 2 concentric pointers

**(Type 4):** Polyamide housing and outer ring

#### Delivery in a case

**! Versions with increased or reduced measuring force, special dials, larger shaft lengths and models with locking screw or lifting device on [request](#).**

## Technical Data

<b>Size:</b>	10/0,01mm Ø58mm
<b>Article number:</b>	1320101
<b>Brand:</b>	KÄFER
<b>Manufacturer number:</b>	M 2 TOP
<b>1 pointer rotation:</b>	1mm
<b>Execution:</b>	Type 1
<b>Measuring range:</b>	10mm
<b>Reading:</b>	0,01mm
<b>Shock proof:</b>	Without
<b>Weight:</b>	0.3kg