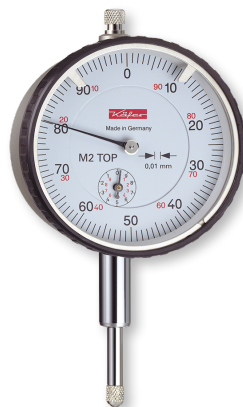


Dial gauges DIN 878 in box
Metal housing, outer ring polyamide
10/0,01mm Ø58mm

Product number: 1320101
EAN / GTIN: 4066918044921
Manufacturer number: M 2 TOP
Customs code: 90318020
Delivery method: Parcel delivery service
Weight: 0.3kg



Product description

- DIN 878
- Dimensions acc. DIN EN ISO 463
- Housing Ø 58 mm
- Adjustable tolerance marks
- Clamping shaft Ø 8 mm h6
- Interchangeable measuring insert M2.5

(Type 1): Metal housing, outer ring polyamide

(Type 2): Metal housing and outer ring

(Type 3): Metal housing, outer ring polyamide with 2 concentric pointers

(Type 4): Polyamide housing and outer ring

Delivery in a case

! Versions with increased or reduced measuring force, special dials, larger shaft lengths and models with locking screw or lifting device on request.

Technical Data

Size:	10/0,01mm Ø58mm
Article no.:	1320101
Brand:	KÄFER
Manufacturer number:	M 2 TOP
1 pointer rotation:	1mm
Execution:	Type 1
Measuring range:	10mm
Reading:	0,01mm
Shock proof:	Without
Weight:	0.3kg